

SOLEX program

SOiL EXploration and Sampling for Science and Education



World Soil Information

ISRIC - World Soil Information has designed a global sampling scheme to broaden its world soil reference collection. ISRIC is looking for sites that are suitable for full soil profile sampling, description and analysis. We seek partners for this exciting and explorative activity, which will include research and training.

Reference soils serving global issues

Soils are living ecosystems that maintain a habitat for biodiversity, store carbon and supply water and nutrients for biomass production. Our soils need to be used sustainably if we are to meet demand for food and preserve the planet's natural resources in the long run. Research on these global issues benefits from comprehensive reference data on the major soils of the world.

Over 1000 profiles

ISRIC has maintained a world soil reference collection since 1966. The collection now includes over 1000 profiles, which have been described, sampled and analysed in accordance with standard international methods. The ISRIC reference collection is used for verifying national datasets, compiling global soil databases, comparing different methods of reference sample analysis, and for developing rules for soil

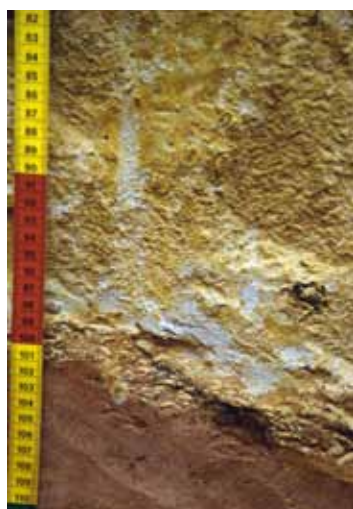


property estimation. Newly collected samples and monoliths will be described and analysed in relation to thematic issues and prepared for display in the ISRIC - World Soil Museum, paying special attention to global issues such as land degradation, climate change and biodiversity.

Quality enhancement

ISRIC seeks new reference sites and soils that:

- provide clear examples of processes and functions related to soil productivity, climate change, biodiversity, land degradation and other global issues
- are of special scientific interest, e.g. WRB soil classification type, land use and management history, soil climo-, chrono-, and toposequences
- are from hitherto under-represented environments, e.g. desert and semi-deserts, steppes, mountain areas, boreal areas
- are from currently under-represented geographic areas, e.g. Central Asia, Northern Europe, North Africa



The SOLEX program (2012-2014) will include full profile sampling (soil monoliths), site and soil description, conventional and physical soil analysis, spectral analysis and collection of supporting information (e.g. high resolution photographs).

Data access

ISRIC is the ICSU accredited World Data Centre for Soils. Upon publication, all primary data will be made freely accessible to the global scientific community and other user groups through ISRIC's web services.

Opportunities for collaboration

ISRIC has been standardizing, classifying, describing, assessing and evaluating the world's soils for over 45 years. It has developed global soil databases and assisted in setting up soil exhibitions worldwide. Within this explorative project, we offer opportunities for joint research on collected soils, training in soil monolith collection, description, sampling, soil classification and setting up an exhibit.



ISRIC - World Soil Information is an independent knowledge and information centre, established in 1966. Our mandate is to serve the international community with information about the world's soils and thus contribute to resolving major global issues. We are the World Data Centre for Soils (WDC-Soils) within the ICSU World Data System. We also maintain the World Soil Museum and World Soil Library. Please visit the ISRIC website for more information and online data access: www.isric.org



World Soil Information

Contact

Stephan Mantel
ISRIC - World Soil Information

T +31 317 483 761
E Stephan.Mantel@wur.nl
I www.isric.org

